

**NUVA**

C O M P A N Y

**VISUAL THEATRE &  
CONTEMPORARY CIRCUS  
PERFORMANCES**

PRESENTS

# DISPLAY

AN EXHIBITION IN MOTION



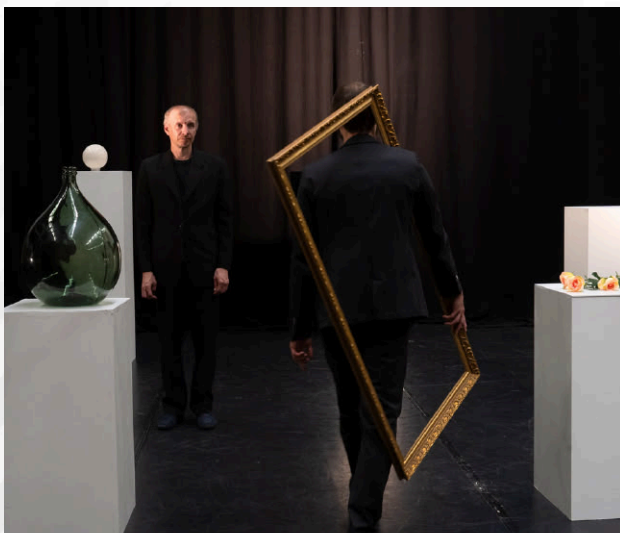
# DISPLAY

**Display is a clever exploration of the unique qualities of creative expression. It is a duet based on object manipulation and juggling, inviting the audience to discover the unexpected and open themselves to a delicate, embodied artistic experience.**

Display merges the worlds of visual art and contemporary circus into a performance where objects arranged for an exhibition come to life. They become part of light, poetic, and at times even comical situations on a journey toward an exhibition that the audience can later observe up close. The focus is not on a finished artwork hanging on the wall but on the very process through which an object becomes art, asking when material becomes meaningful and what art ultimately is. The piece is designed to be experienced not only in theatre spaces but also in museums, galleries, and within exhibitions.

The artistic process is rooted in material-based and embodied research: an intuitive exploration in which each object contributes its own simple, physical presence to the performance's aesthetics and dramaturgy. Every movement, grip, and swing forms a subtle dialogue between body and material.

The materials used in the work, such as sculptures, pedestals, frames, and packing materials, function both as circus apparatuses and as visual art objects whose meaning shifts through movement and context.



By bringing the refined and distinctive interactions between objects and bodies, which are characteristic of Nuua's work, into the realm of visual art, the piece offers a different way of seeing art. It is not presented as a finished image, form, or statement, but as a constantly evolving process in which beauty, uncertainty, and a touch of absurd humor exist side by side.

The performance may open unexpected landscapes in the viewer's mind. Surprising interactions between objects and bodies stimulate the imagination and encourage reflection on personal perceptions of movement and art.

Circus has long been seen as entertainment and often sidelined in contemporary art. By bringing contemporary circus into an exhibition context and blending it with abstract art, the piece highlights the space between art and entertainment.

## CREATIVE TEAM

Concept and Performance:

**Olli Vuorinen & Sampo Kurppa**

Dramaturge: **Thom Monkton**

Outside eye: **Inka Pehkonen**

Lighting Design: **Teo Lanerva**

Music & sound design: **Konsta Leinonen**

Production: **Nuua Company**

Co-Production: **EMMA - Espoo Museum of Modern Art, Agit Cirk**

Support: **Arts promotion center Finland, City of Helsinki, Arts printing House (LT), Cirko-new circus center, Kone foundation**

# OUR TALENT TEAM



**Sampo Kurppa**  
Concept & performing

I am a circus artist, physical theater performer, and even have a bit of an actor's streak. With 20 years of performing experience behind me, I work broadly across various arts in productions of different sizes. Comedy, movement, and object manipulation draw me in. Everyday recognizable actions, observing people, and my own clumsiness serve as my greatest inspirations. In a performance situation, I aim to capture the feeling of controlling a derailed train. In time, everything slips into control.



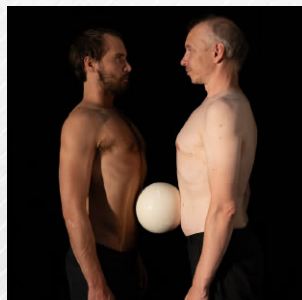
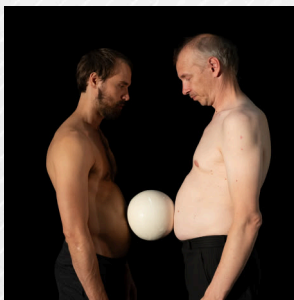
**Olli Vuorinen**  
Concept & performing

Performer, director, and founder of Nuua company graduated from a French circus school AcademieFratellini in 2011. Vuorinen did two award-winning performances at Cirque de Demain Festival, and his company got selected in 2012 for an EU-funded Circus Next project. Alongside Nuua company Vuorinen has been working with numerous circus and physical theatre companies. Olli Vuorinen is a very productive Finnish contemporary circus artist. In past years he has been performing over 20 different countries. Vuorinen is known for his personal approach to performing, innovative juggling techniques, and varied objects theater skills



**Konsta Leinonen**  
Live-music and sound design

Finnish musician Konsta Leinonen fuses his experience working with film, recording studios and multiple performative arts to find new ways to bring his perception of (post-)modern living into sound and music. Leinonen merges live instrumentation with highly dynamic hands-on electronics and has a fascination for new technological frontiers via generative AI music & multimedia. Leinonen enjoys working closely with artists to reach a consistent, shared artistic vision.



**Thomas Monckton**  
Dramaturg

Thom Monckton is a circus artist, filmmaker and director born in New Zealand, Thom trained in circus in Christchurch and physical theatre at Jacques Lecoq in Paris. His performances have toured to over 30 different countries with every solo show presented at Edinburgh Fringe (The Artist, Only Bones v1.0, and The Pianist) being nominated for the Total Theatre Awards. Thom's debut solo show Moving Stationery won six awards across three festivals and garnered him Actor of The Year 2012 in Wellington's Theatre Awards.



**Teo Lanerva**  
Lighting design

Teo Lanerva is a freelance lighting and video designer (MA, Theatrical Arts) based in Helsinki, Finland. He works with contemporary performances, concerts and events ranging from small underground clubs to festivals. He has been granted a säde-award and his designs have been performed in more than ten countries. Lanerva's recent works include all Nuua Company creations and choreographer Mikko Niemistö's solo Odd Meters at Zodiak, opera FLASH FLASH composed by Juhani Nuorvala at Musica Nova Festival, and light art piece Liquid Line at Lux Helsinki.



**Inka Pehkonen**  
Outside eye

Inka Pehkonen is a Finnish circus artist based in Berlin. She graduated from Lahti Professional Circus Education in 2015 and is co-founder of SISUS, working as a performer, director, and producer while touring across Europe. Together with Imogen Huzel, she is co-founder and artistic director of Based on Kimberly.

Beyond her company work, Inka collaborates with artists across circus and with musicians, dancers, actors, and clowns. She has toured to over 20 countries, working with companies and artists including Cirkus Cirkör, Sanja Kosonen & L'Avant-Courrier, Burnt Out Punks, Clowns Without Borders Sweden, Agit Cirk, Lahti City Theatre, and the cross-art collective Piste.

**BY FREELY MIXING DIFFERENT  
PERFORMING ARTS, WE LOOK  
FOR AN APPROACH BASED ON  
ARTISTIC VERSATILITY**



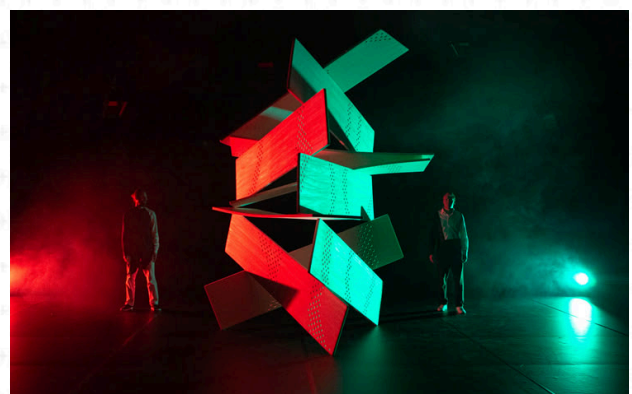
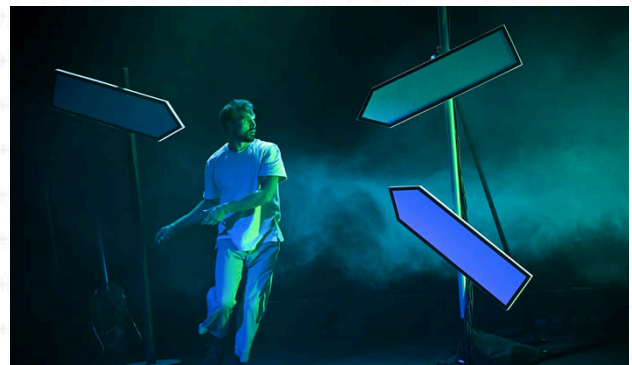
**Nuua Company is a Finnish contemporary circus and visual theater group founded in 2013. With its Experimental works, Nuua has redeemed its place in the international performing arts scene**

On its ten-year journey, Nuua Company has been selected for a Circus next program. Nuua's award-winning performances have received notable mentions from critics and books about the contemporary circus, and the performances have been touring in 21 countries.

Nuua wants to provide a safe environment for creative work where one can question the norms of the circus, learn new skills, and contribute to the process in a collaborative way that makes each creation rich and adventurous.

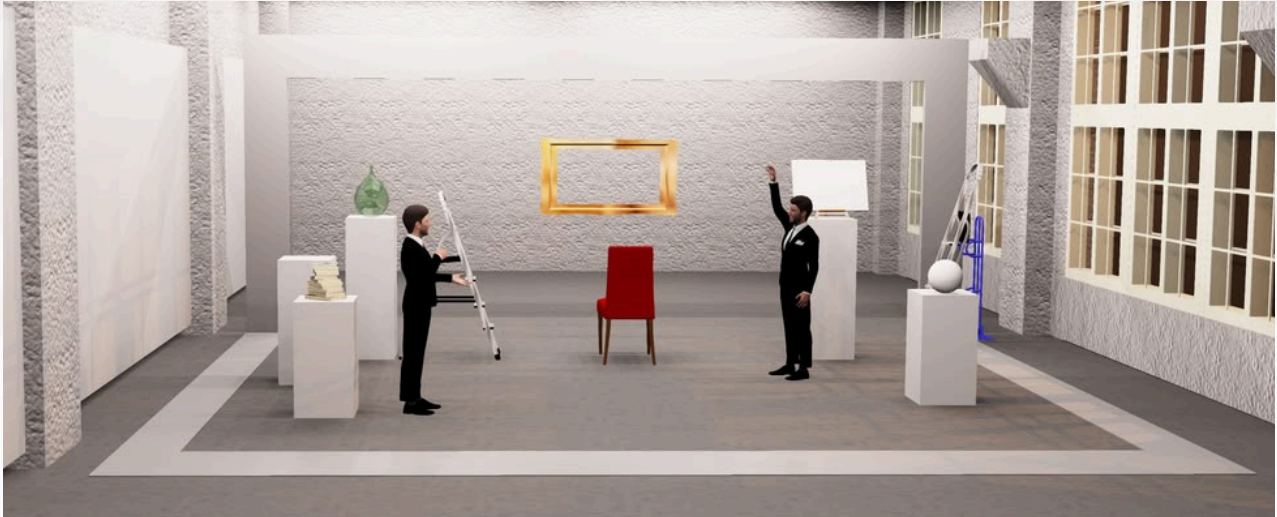
Nuua renews juggling as object theater, concepts connecting body and object movements, and explores circus techniques as tools of expression. Depending on the viewer's personal experiences, our multilayered performances open up to everyone differently. We are awakening the emotions, imagination, and sensitivity into an empowered state where experientiality precedes narratives, and the spectator becomes more receptive to new dreamlike experiences.

**[WWW.NUUA.COMPANY](http://WWW.NUUA.COMPANY)**



# DISPLAY

## TECHNICAL SHEET (PROVISORY)



### IMPORTANT

There is two technical versions of this piece:

- Gallery version / White box
- Theatre version / Black box

Main difference is the **light design**.

Theatre version has a light plot and a lighting designer on tour. The gallery version uses the lights and technical means available at venue.

### GALLERY VERSION

SET UP : 3-4h

SET DOWN : 1h

ON TOUR: 3

2 performers, 1 musicien

### THEATRE VERSION

SET UP : Same day set-up possible

SET DOWN : 1,5h

ON TOUR: 4

2 performers, 1 musicien, 1 light technician

### CURTAINS & DANCE MAT

Black box with a backdrop.

Black dance marley Dance floor.

### STAGE DIMENSIONS

Preferred stage dimensions :

- Width: 10m
- Depth: 7,5m
- Height: 4,5m

Minimum stage dimensions :

- Width: 8,5m
- Depth: 6m
- Height: 3,5m

 50 MIN

 ALL AUDIENCE

 INDOOR

 WITHOUT WORDS

 3H

 W 9M | D 7,5M | H 4M

 50-300

# NUVA

## YOUR GREEN TOURING COMPANY

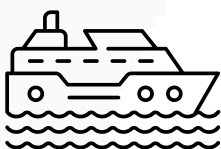
### SET & CARGO

The whole team travels together by VAN, using the FERRY transport from **Helsinki to Travemunde, GER / Tallinn, EE / Stockholm, SWE** for economic and sustainable touring



### FINLAND

Helsinki



YOUR PLACE

**NUUA**

C O M P A N Y

---

CONTACT

**Olli Vuorinen**

**Artistic director**

+ 358 500 435 286

olli@nuua.company

**WWW.NUUA.COMPANY**